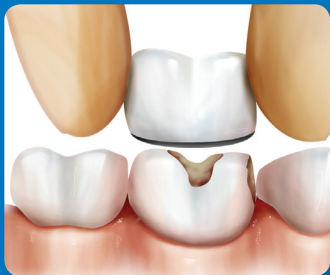


# Quick Start Guide - NuSmile *Signature* Posterior

## Step 1

*Pick the right size*



Choose crowns based on the original tooth size. *As a general rule, use NuSmile Crowns that are one to two sizes smaller than for traditional stainless steel crowns (SSC).*

## Step 2

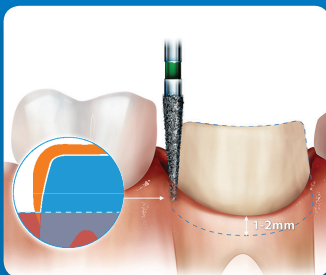
*Initiate preparation*



A coarse football diamond bur is a good choice for occlusal reduction of approximately 2mm.

## Step 3

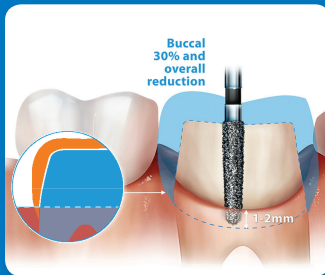
*Interproximal reduction*



A fine tapered diamond or carbide bur may be used to open the interproximal contacts and to initiate circumferential reduction of the tooth.

## Step 4

*Refine the preparation*



A coarse tapered diamond or carbide bur may be used to create a feather-edge margin. Reduce the tooth adequately on the buccal to allow a natural gingival contour when the crown is seated.

800 346 5133 | +1 713 861 0033 | [www.nusmilecrowns.com](http://www.nusmilecrowns.com) | 100% SATISFACTION GUARANTEE

**NuSmile**<sup>®</sup>  
PEDIATRIC CROWNS

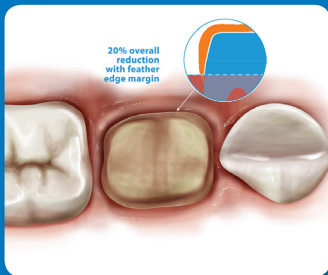
Refer to NuSmile *Signature* Crowns Technical Guide for more detailed information

1.5m09A14

# Quick Start Guide - NuSmile *Signature* Posterior

## Step 5

Reduction



Pre-veneered crowns require more circumferential, buccal and occlusal reduction than traditional SSC's. The feather-edge margin should extend approximately 2mm subgingivally.

## Step 6

Test the fit



Try the crowns on the teeth. No crimping – crowns should seat with finger pressure only. All crowns should seat together and fit subgingivally without distorting the tissue.

## Step 7

Fill. Position. Clean up.



Clean teeth of saliva, blood or debris and control gingival hemorrhage. Use NuSmile® **BioCem™** Universal BioActive Cement or high-quality glass ionomer cement. Hold crowns firmly in place until cement is set.

## Step 8

Finish



Check occlusion; if a NuSmile *Signature* crown is in high occlusion, the opposing teeth may be adjusted as necessary.

800 346 5133 | +1 713 861 0033 | [www.nusmilecrowns.com](http://www.nusmilecrowns.com) | 100% SATISFACTION GUARANTEE

**NuSmile®**  
PEDIATRIC CROWNS

NuSmile<sup>®</sup>

*Signature* Quick Start



– 0.65mm

– 0.95mm



*Use only for supragingival reduction steps*

800 346 5133 | +1 713 861 0033 | nusmile.com | 100% SATISFACTION GUARANTEE

Refer to NuSmile Signature IFU-01 for more detailed information

# Quick Start Guide: NuSmile Signature Anterior

## Step 1



**Incisal depth cuts** - base of black stripe diamond (approx 1mm)

## Step 2



**Facial depth cuts** - tip of black stripe diamond (approx 0.5mm)

## Step 3



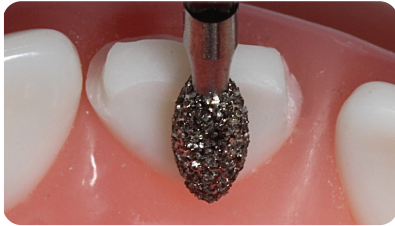
**Interproximal slices** - 1.5 X diameter tip of black stripe diamond (approx 1mm)

## Step 4



**Level depth cuts and round facial/lingual interproximal line angles**

## Step 5



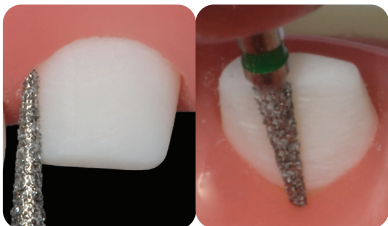
**Remove cingulum tapering to incisal**  
- football diamond

## Step 6



**Test fit to shoulder created at gingival margin**

## Step 7



**Remove shoulder & extend preparation subgingival to feather-edge**  
- green stripe diamond

## Step 8



**Final test fitting**

When multiple teeth are being restored, try all crowns together to ensure they fit well and seat passively. If crowns do not fit passively, refine the preparation of the tooth to fit the crown.